

DF6500 SAR DF

FEATURES

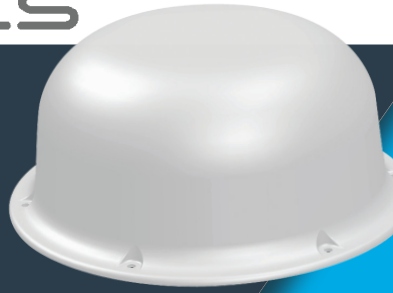
Frequency range from 100 MHz to 512MHz

Freq. spacing from 118 to 136.990: 8.33 kHz, otherwise 25 kHz

8 frequencies sequentially trackable (4 user settable and 4 guard frequencies)

Bearable modulation: A3A, A3E, F3E, A2X, G1D, COSPAS-SARSAT

External antenna port for increased sensitivity in listening mode (audio reception)



AN6500



CU6500



100MHz
to
512MHz

KHz
8.33
25

COSPAS
SARSAT
406



SPECIAL MISSION

OVERVIEW

The DF6500 is the latest SEARCH AND RESCUE DIRECTION FINDER (SAR DF) product supplied by Becker Avionics. The system responds to latest SAR DF requirements, needs of the aviation industry and of SAR organizations. The DF6500 is a homing device that indicates a direction to any AM, FM or PM radio emission source in a frequency range from 100 MHz to 512 MHz.

The unit has been designed for harsh environmental conditions, thus making of the DF6500 one of the most reliable homing system for SAR aircrafts. The device is capable of locating and decoding any type of COSPAS-SARSAT type approved emergency beacon. The DF6500 is composed of two line replaceable units (LRUs):

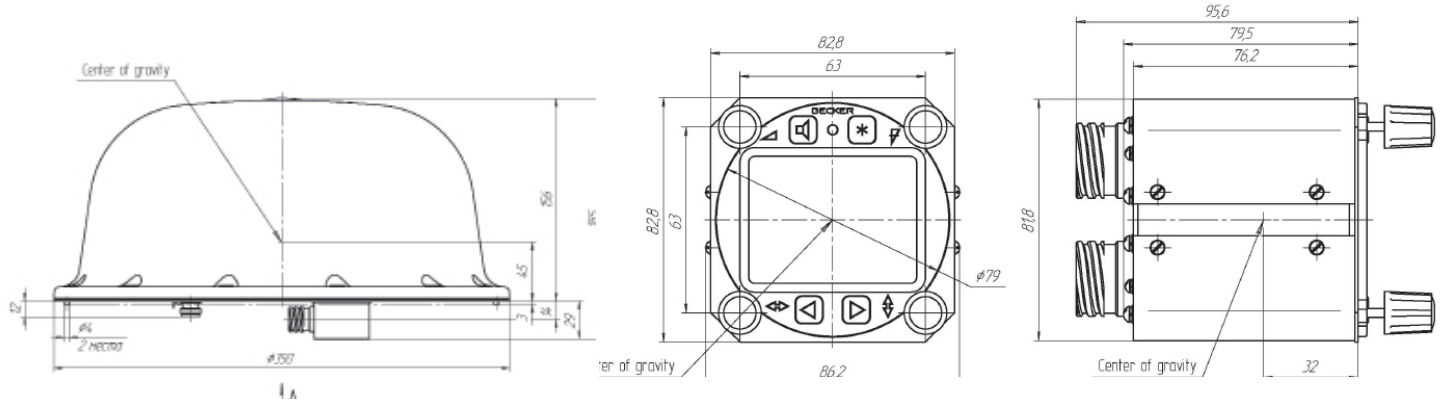
the AN6500 antenna and the CU6500 control unit.

The DF6500 can operate stand alone or remotely controlled by an aircraft flight computer (*). A BITE features allows for a complete system check at power on (PBIT) and during operation (CBIT). An enhanced BITE can be initiated by the user (IBIT) at any time for a full confidence check.

(* Integrations and interface customization shall be discussed in detail prior to any commitment.

BENEFITS

- ▶ Maximum flight altitude: 10 700 m (35 104 ft)
- ▶ Low operating temperature -60°C (antenna)
- ▶ Interfaces: bi-directional ARINC 429 and RS422, ARINC 743 Input (GNSS data)
- ▶ Option: protocol customisation for RS422 and / or ARINC 429



TECHNICAL DATA

General characteristics

Operating temperature

-60 °C to +55 °C (short time: +70 °C / 30 min)

Storage temperature

-66 °C to +85 °C

Dimensions

Ø 350 mm x 185 mm (155 mm over the fuselage of the aircraft)

Weight

4.5 kg

Radome colour

RAL 9010 (pure white)

Ingress protection

IP65

AN6500 Antenna Unit

System colors

Backlight and control buttons colours: warm white (day) and green (night mode)

User languages

English, Russian and French

Operating temperature

-60 °C to +55 °C

Storage temperature

-60 °C to +85 °C

Dimensions

Dimensions: 86.2 mm x 82.8 mm x 122 mm

Weight

0.5 kg

CU6500 Control Unit

Common characteristics

Power supply

DC, 27V (possible from 18V to 32.3V)

Power consumption

Typical 20W @ 27V, 30W @ -55 °C